

NOTE:  
REQUIRED FOR  
FLOATING CABLE

NOTE:  
ALL HOISTWAY CONSTRUCTION MUST COMPLY WITH NATIONAL, STATE,  
AND LOCAL  
CODES. HOISTWAY MUST BE PLUMB AND STRAIGHT FROM TOP TO  
BOTTOM WITH NO PROJECTIONS INTO THE HOISTWAY.

DWG VIEW

HOISTWAY LAYOUT

PART NUMBER

80205326

REV. DATE

-

-

-

**INCLINATOR**  
COMPANY OF AMERICA  
HARRISBURG, PA

DRAWING TITLE

SAPP RESIDENCE

DRAWING NO.

MRLC0360

PAGE:

2/5

DRAWN BY:

J.PETTYJOHN

DWG. DATE

02/11/2008

JOB OR APP.#

08-071-MC

DEALER P.O.#

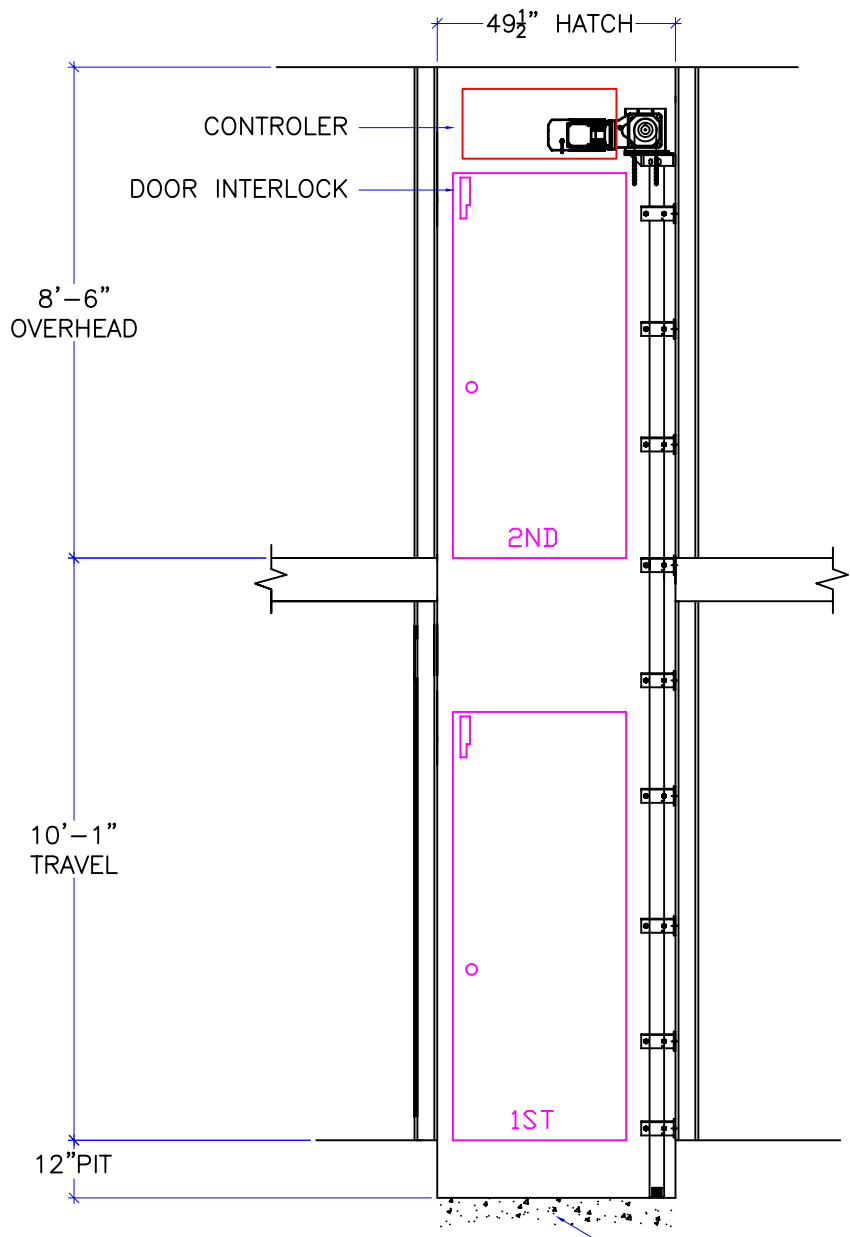
28001

DWG. SCALE

1:24

REV. LEVEL(1-3)

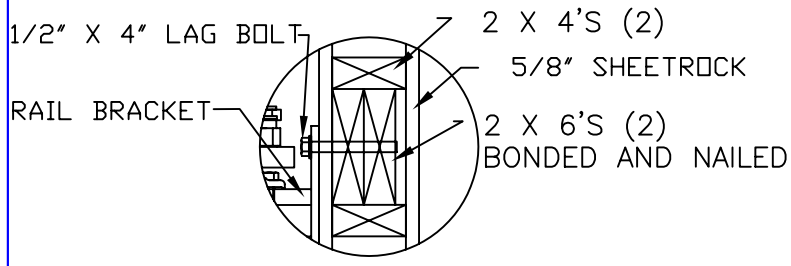
-



6" MIN. 3000 PSI REBAR  
 REINFORCED CONCRETE  
 #4 AT 12" O.C. EACH WAY

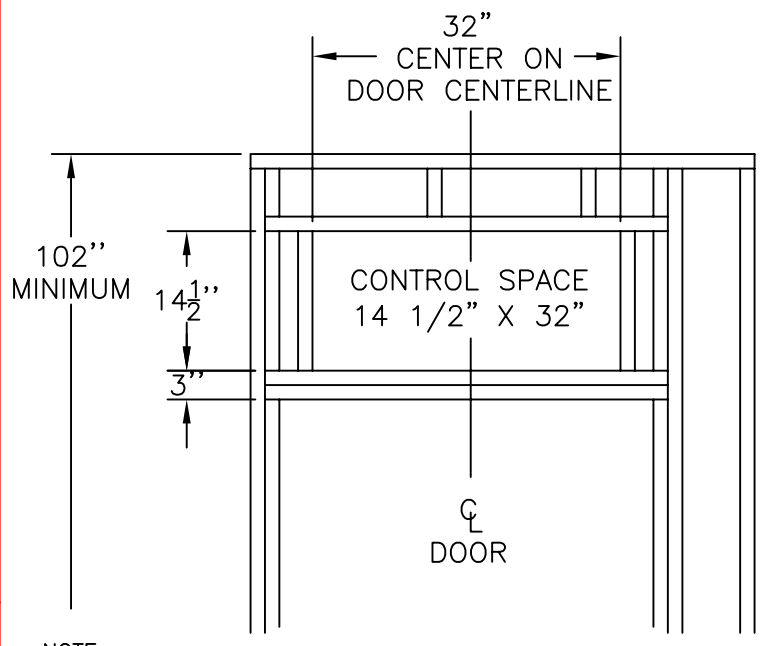
DWG VIEW		SECTION A-A			PART NUMBER	80205326	REV. DATE	-
DRAWING TITLE		SAPP RESIDENCE			DRAWING NO.	MRLC0360	REV. DATE	-
PAGE:	DRAWN BY:	DWG. DATE	JOB OR APP.#	DEALER P.O.#	DWG. SCALE	REV. LEVEL(1-3)	-	
3/5	J.PETTYJOHN	02/11/2008	08-071-MC	28001	1:24		-	





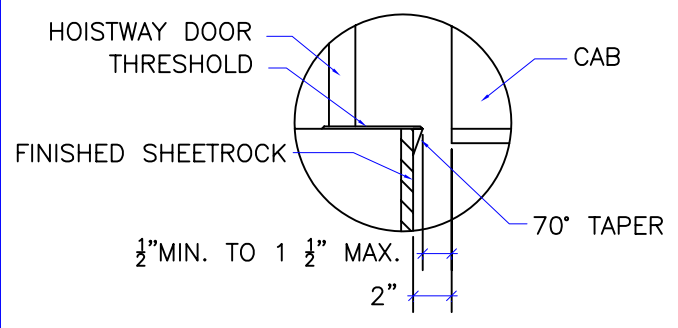
NOTE:  
 WHEN STUD AND SHEETROCK CONSTRUCTION IS USED ON THE RAIL BRACKET SUPPORT WALL DBL 2 X 6 STUDING IS NEEDED TO MOUNT THE RAIL BRACKETS. DO NOT USE METAL STUDS.

RAIL DETAIL



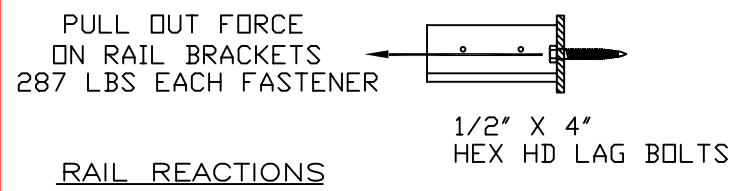
NOTE:  
 CONTROL SPACE MUST BE SQUARE AND TO SIZE. GIVEN DIMENSIONS ARE MINIMUM SIZE AND MAY BE UP TO 1/8\"/>

UPPER DOOR OVERHEAD FRAMING DETAIL

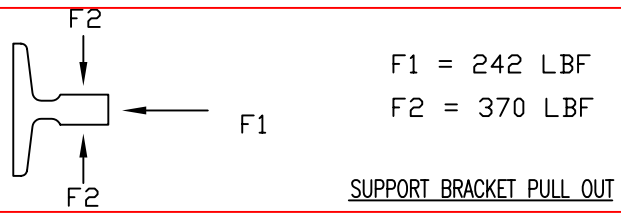


DOOR SILLS TO BE INSTALLED BY G.C. AFTER LIFT SUPPLIER HAS INSTALLED A RUNNING PLATFORM. SILL TO BE BROUGHT OUT TO NOT LESS THAN 1/2\"/>

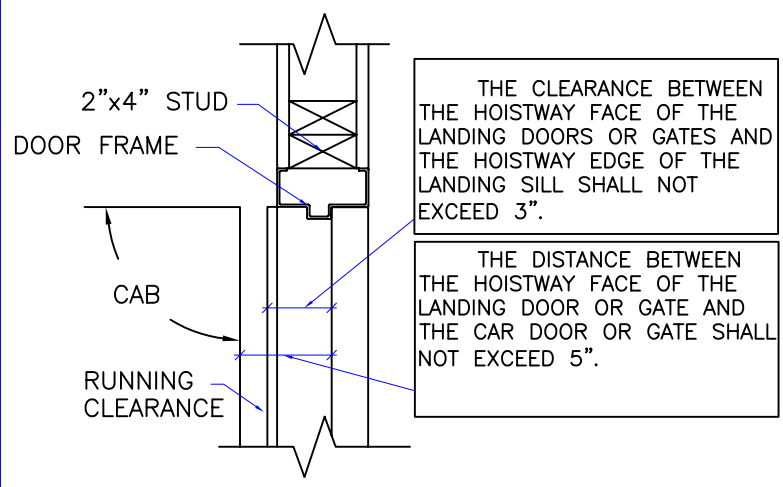
SILL DETAIL



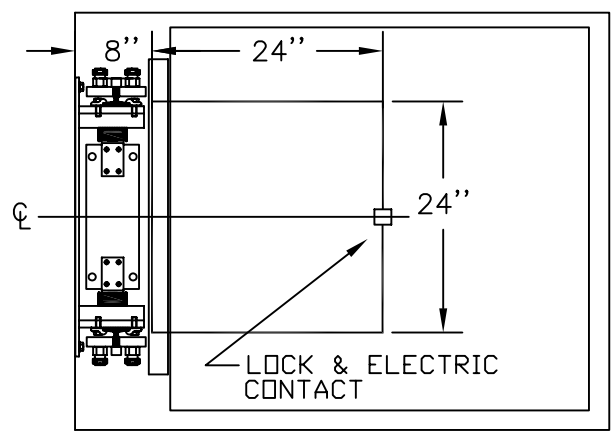
RAIL REACTIONS



SUPPORT BRACKET PULL OUT



DOOR FRAME DETAIL



ACCESS HATCH

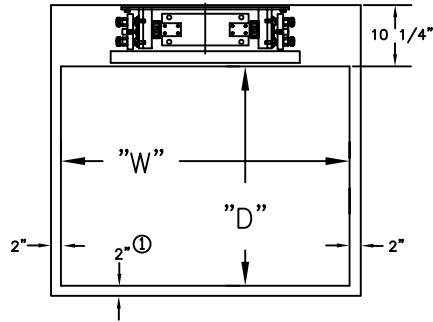
DWG VIEW		PART NUMBER		REV. DATE		
DETAILS, DATA, CODES		80205326		-		
DRAWING TITLE		DRAWING NO.		-		
SAPP RESIDENCE		MRLC0360		-		
PAGE:	DRAWN BY:	DWG. DATE	JOB OR APP.#	DEALER P.O.#	DWG. SCALE	REV. LEVEL(1-3)
4/5	J.PETTYJOHN	02/11/2008	08-071-MC	28001	1:24	-



1. EACH RAIL BRACKET FASTENER SHALL PROVIDE A MINIMUM PULL OUT OF 287 LBS.
2. RAIL BRACKET SPACING SHALL BE DETERMINED BY THE MANUFACTURER.
3. RAIL FASTENING MUST BE ABLE TO SUPPORT THE LOADS IMPOSED. SEE RAIL REACTIONS AND SUPPORT BRACKET PULLOUTS ON MAIN BODY OF DRAWING BRACKETS ARE PRE-DRILLED.
4. PIT FLOOR SHALL BE CONSTRUCTED TO WITHSTAND AN IMPACT LOAD OF 3123 LBS.

MAXIMUM SIZE OF CAR 15 FT. SQ. (NET)  
 MAXIMUM "D" DIMENSION OF CAR: 44"  
 MINIMUM "W" DIMENSION OF CAR: 42"<sup>①</sup>  
 MINIMUM PIT DEPTH: 8"

① "W" DIMENSIONS LESS THAN 48"  
 REQUIRE 1" ADDITIONAL CLEARANCE  
 OPPOSITE THE RAIL.

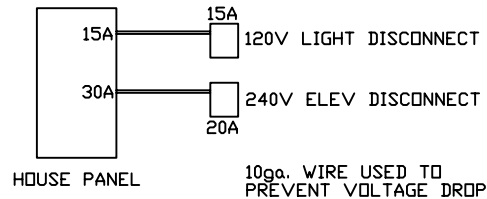


## TECHNICAL DATA

### 1. NOTICE TO ELECTRICAL CONTRACTOR:

- \* ALL ELECTRICAL WIRING MUST BE DONE BY A JOURNEYMAN MECHANIC AND MUST MEET ALL NATIONAL, STATE, AND LOCAL CODES.
- \* BRING (3) #10 W/GND FROM ELEVATOR DISCONNECT SWITCH LOCATED NEAR RESIDENCE INCOMING POWER PANEL (240V, NEUTRAL, GROUND) TO THE TOP OF THE HOISTWAY. DISCONNECT IS SUPPLIED BY OTHERS AND MUST BE LOCKABLE.
- \* BRING (2) #12 W/GND FROM A SEPARATE DEDICATED DISCONNECT NEAR THE RESIDENCE INCOMING POWER PANEL FOR THE CAR LIGHT, UTILITY LIGHT & GFI RECEPTACLE TO THE TOP OF THE HOISTWAY. UTILITY LIGHT, GFI RECEPTACLE, AND LOCKABLE DISCONNECT TO BE SUPPLIED BY OTHERS.
- \* REQUIRED LOW VOLTAGE WIRING IS SUPPLIED BY MANUFACTURER. ALL EXTENSIONS ADDITIONS, ETC. SHALL BE DONE WITH THE SAME SIZE AND TYPE OF WIRE AS ORIGINALLY SUPPLIED BY THE MANUFACTURER.

2H.P. MOTOR 208/240 VOLTS 3 PHASE  
 60 CYCLE (RUNS ON SINGLE PHASE)  
 6.1 AMPS RUN  
 30 AMP MAIN LINE BREAKER



### 2. NOTICE TO G.C.

- \* NO OTHER WIRING OR PIPING NOT PART OF THE ELEVATOR SYSTEM SHALL BE PLACED IN THE HOISTWAY.
- \* SWING TYPE SHAFT DOORS WITH LATCHING HARDWARE TO BE SUPPLIED BY OTHERS.
- \* PROVIDE A 24" X 24" ACCESS HATCH IN THE CEILING OF THE HOISTWAY TO FACILITATE INSTALLATION OF MACHINE AND EQUIPMENT. (SEE HATCH ACCESS PANEL) ACCESS HATCH MUST HAVE FLAME SPREAD RATE EQUIVELANT OR GREATER AS THE CEILING OF THE HOISTWAY.
- \* LOW LYING AREAS MUST PROVIDE ADEQUATE DRAINAGE IN THE PIT TO PREVENT WATER FROM ACCUMULATING.

### 3. NOTICE TO INSTALLER (MANDATORY EQUIPMENT)

- \* A TELEPHONE LINE SHALL BE SUPPLIED TO THE TOP OF THE HOISTWAY AND SHALL BE CONNECTED TO A 24 HOUR CENTRAL EXCHANGE.
- \* ALL MEANS FOR ACCESS TO EQUIPMENT OR HOISTWAY SHALL BE PROVIDED WITH A LOCK AND ELECTRICAL CONTACT. ALL SHAFT DOORS MUST BE INTERLOCKED.

DWG VIEW TECHNICAL DATA, ELEVATOR NOTES		PART NUMBER 80205326		REV. DATE - - -	
INCLINATOR <small>COMPANY OF AMERICA</small> <small>HARRISBURG, PA</small>		DRAWING TITLE SAPP RESIDENCE		DRAWING NO. MRLC0360	
PAGE: 5/5	DRAWN BY: J.PETTYJOHN	DWG. DATE 02/11/2008	JOB OR APP.# 08-071-MC	DEALER P.O.# 28001	DWG. SCALE 1:24
					REV. LEVEL (1-3) -