

SHOP DRAWING NAME

ARCHITECT

GENERAL CONTRACTOR

EQUIPMENT SUPPLIED BY:

SPECIFICATIONS

SL-54 RH  
 2 LANDING

**Spectra-Lift**

VERTICAL LIFT

CAR 36"Dx51"Wx42"H CODE(S) 4,5  
 CAPACITY 750 LBS. AT 18 F.P.M.  
 24 VDC HYDRAULIC POWER UNIT  
 120 VAC BATTERY CHARGER

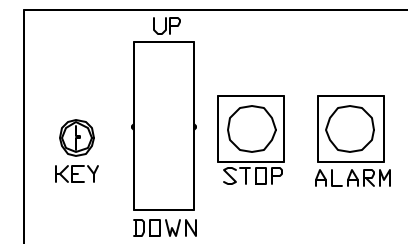
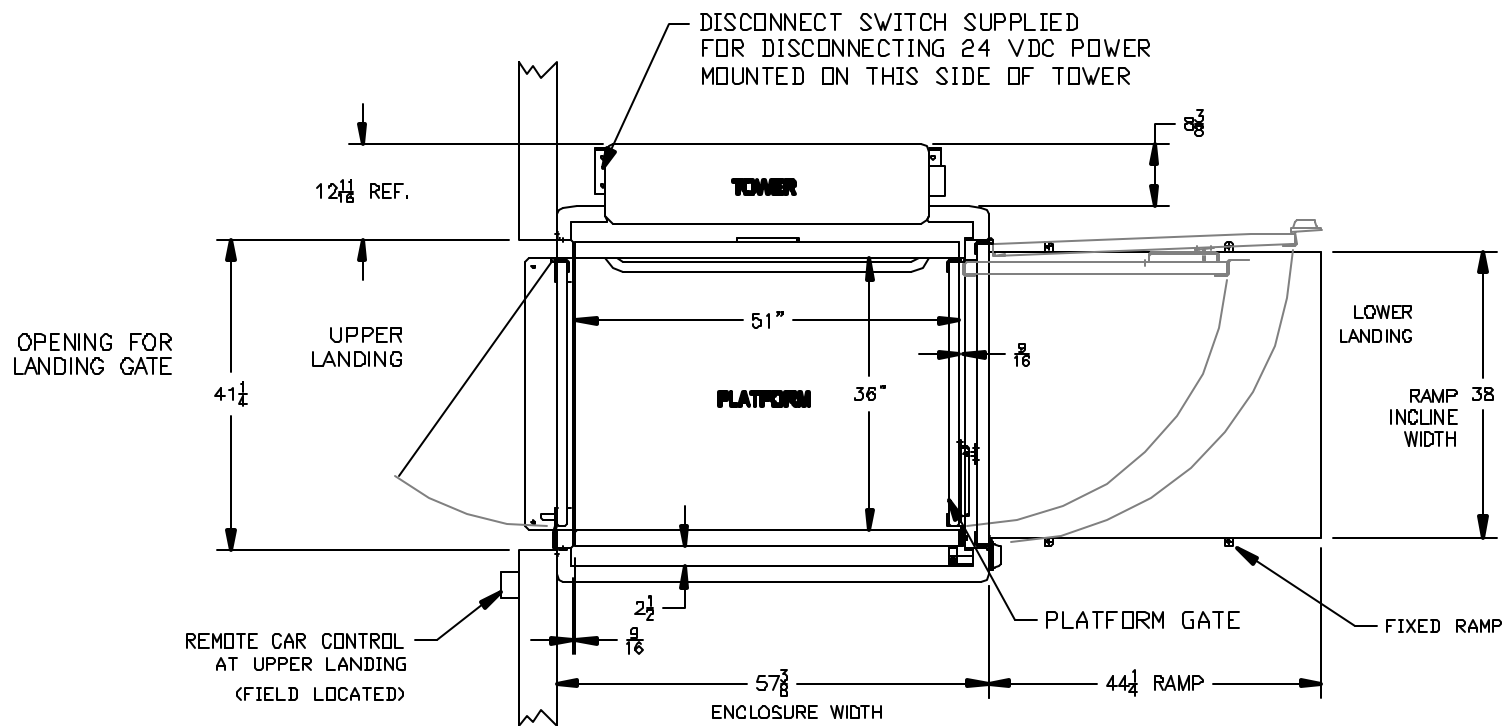
- ALL DOORS MUST BE INTERLOCKED
- KEYSWITCH OPERATION
- AUTO FOLD RAMP
- STATIONARY RAMP
- LANDING GATE W/ INTERLOCK
- PLATFORM GATE WITH INTERLOCK
- EMERGENCY ALARM
- EMERGENCY STOP
- MANUAL LOWERING
- PLATFORM SAFETY MECHANISM
- INSTANT REVERSE
- LIMIT SWITCHES
- ENCLOSURE DOORS BY INCOA
- ENCLOSURE BY INCOA

NOTICE TO ELECTRICAL CONTRACTOR:  
 INSTALL 110V. SINGLE PHASE  
 DISCONNECT SWITCH

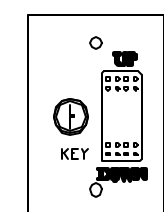
120 VAC SINGLE PHASE  
 50/60 HZ  
 15 AMP MAIN LINE FUSE

INCOA JOB #  
 DEALER P.D. #  
 DRAWING BY:  
 DATE:

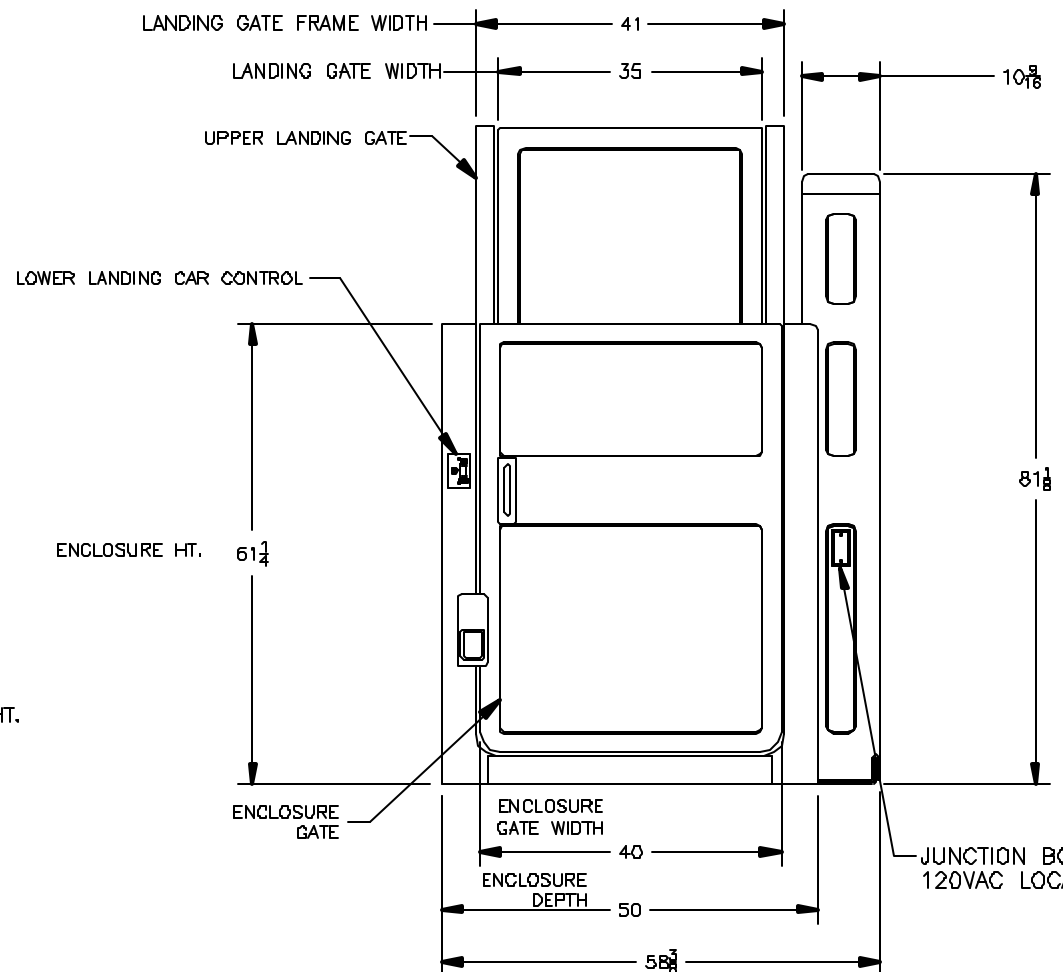
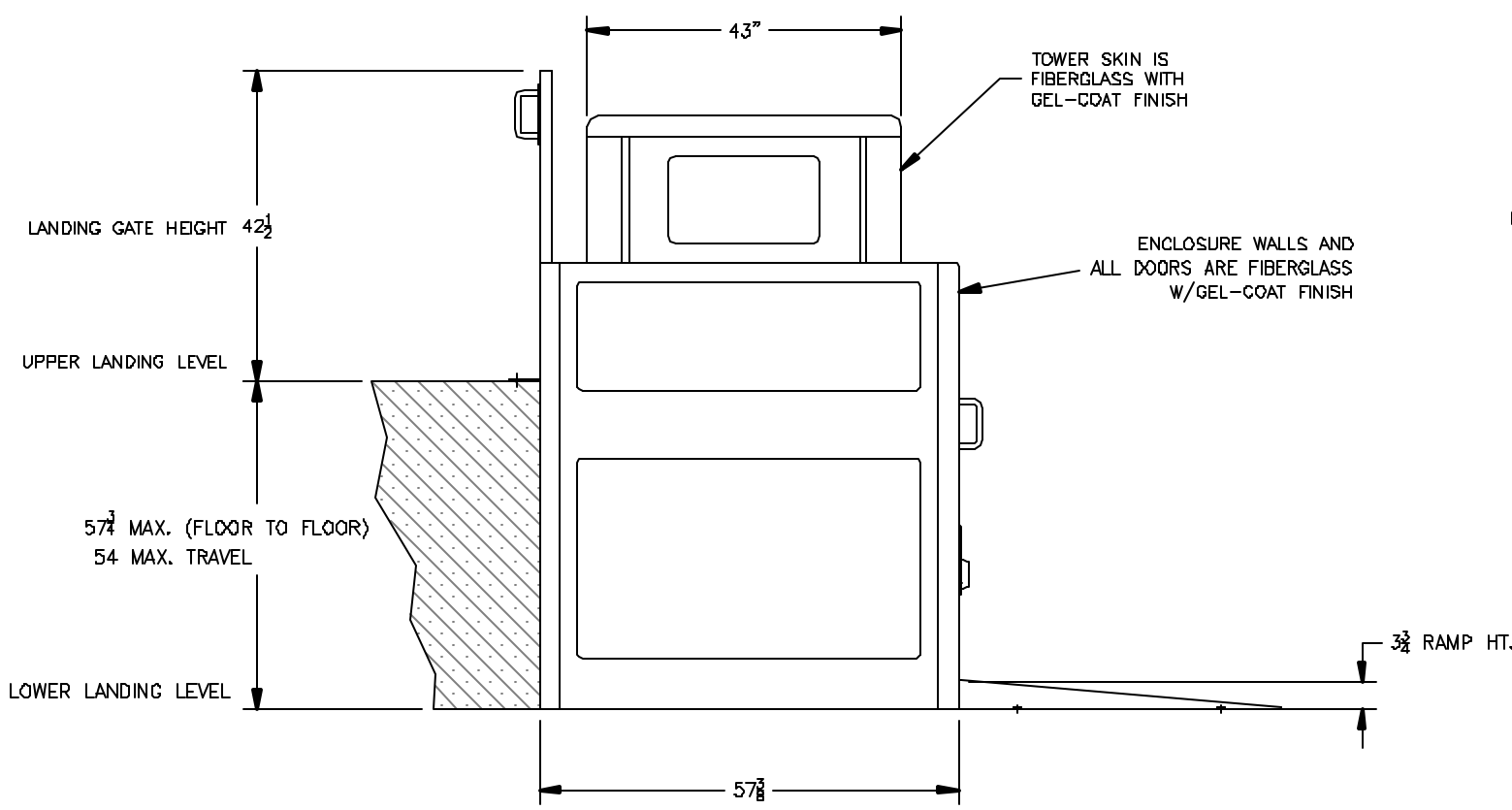
DRAWING IDENTIFICATION NUMBER



CAR CONTROL  
 (MOUNTED ON  
 THE PLATFORM)



CAR CONTROL  
 (USES A STD. SIZE  
 SURFACE MOUNT BOX  
 SUPPLIED BY INCOA)



NOTE:  
 FLOOR LOAD @ CAPACITY:  
 STATIC - 1965 lbs.  
 DYNAMIC - 3415 lbs.

ALL DIMENSIONS ARE IN INCHES