

SPECIFICATIONS

4 LANDING
ELEVETTE 3400

CAR 36"3x48"x7'-0" (CODES) 4
CAPACITY 500 LBS. AT 80 F.P.M.
EMERGENCY 5,700 LBS. T.S. IMP. PLDW
SHELL 3'-4" x 8" x 19 IMP.
CAR CONSTRUCTION 3/4" HEAVY VENEER
COPPER/PANEL SELECTION MAPLE

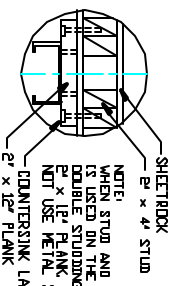
- ☐ ALL DOORS INTERLOCKED
- ☐ MACHINE LIMIT
- ☐ SOUND INSULATING BASE
- ☐ DOWN LIGHT - 2
- ☐ UP LIGHT
- ☐ FLUORINE GATE
- ☐ GATE SAFETY BAR
- ☐ EMERGENCY LIGHT AND ALARM
- ☐ ALARM BELL
- ☐ IN USE LIGHTS
- ☐ ARRIVAL LIGHTS
- ☐ HANDRAIL(S) - BRASS BENDED
- ☐ BUFFER SPRING
- ☐ KEYSWITCH OPERATION
- ☐ STABILIZER
- ☐ HALF TROLLEY

NOTE TO ELECTRICAL CONTRACTOR:
BRING 4 80 WIRE TO DISCONNECT SWITCH (B)-10, (1)-NEUTRAL, (3)-GROUND 60 AMP. (NOTE 280 VOLTS 1 PHASE 30 AMP MAIN LINE FUSE)

NOTE TO ELEVATOR CONTRACTOR OR HIS REPRESENTATIVE: ALL ELECTRICAL WIRING MUST BE DONE BY A JOURNEMAN MECHANIC AND MUST MEET ALL NATIONAL, STATE AND LOCAL CODES.

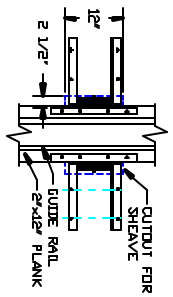
NOTE: ALL HOISTWAY AND MACHINE ROOM CONSTRUCTION MUST COMPLY WITH NATIONAL, STATE AND LOCAL CODES. PLEASE ADVISE INCO OF ANY CHANGES NEEDED TO THE DRAWING FOR COMPLIANCE IN YOUR AREA.

SWING TYPE SHAFT DOORS BY OTHERS

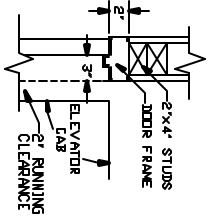


DETAIL

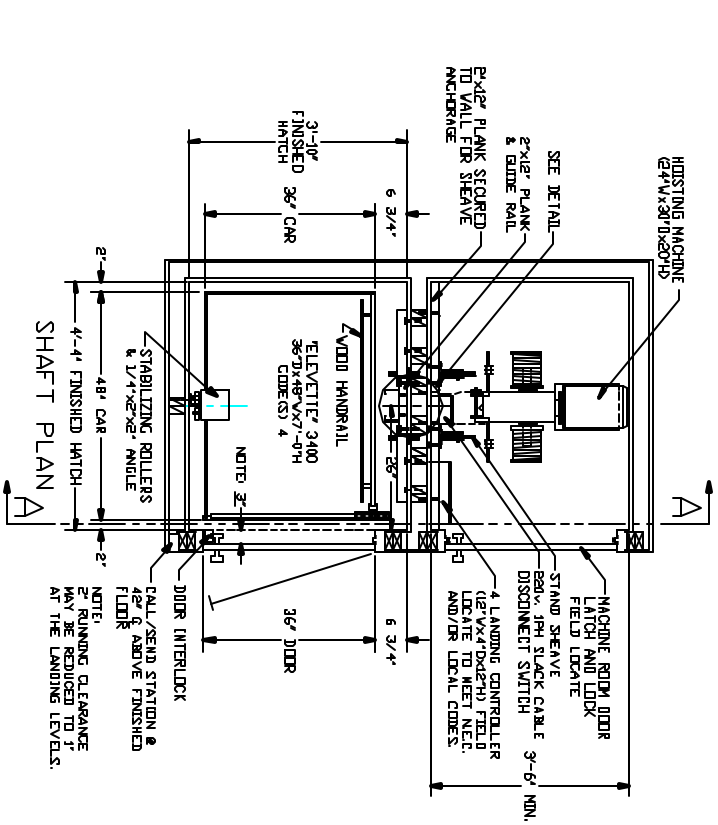
- TECHNICAL DATA**
1. REACTION: ON ALL SHEAVES AND POINTINGS
STATIC = 1,000 LBS.
IMPACT = 2,200 LBS.
 2. FASTENING OF HOISTING MACHINE TO CONCRETE
1/2" x 3" HULL BOLTS (OR EQUAL)
 3. RAIL FASTENING TO 2"x12" PLANK
MIN. 3/4" FACTOR OF SAFETY. RAIL IS PRE-BOLTED TO 2"x12" PLANK.
 4. BOLT FASTENING OF CAR TO TROLLEY
1/2" - 18 x 4" SOCKET HD CAP SCREWS



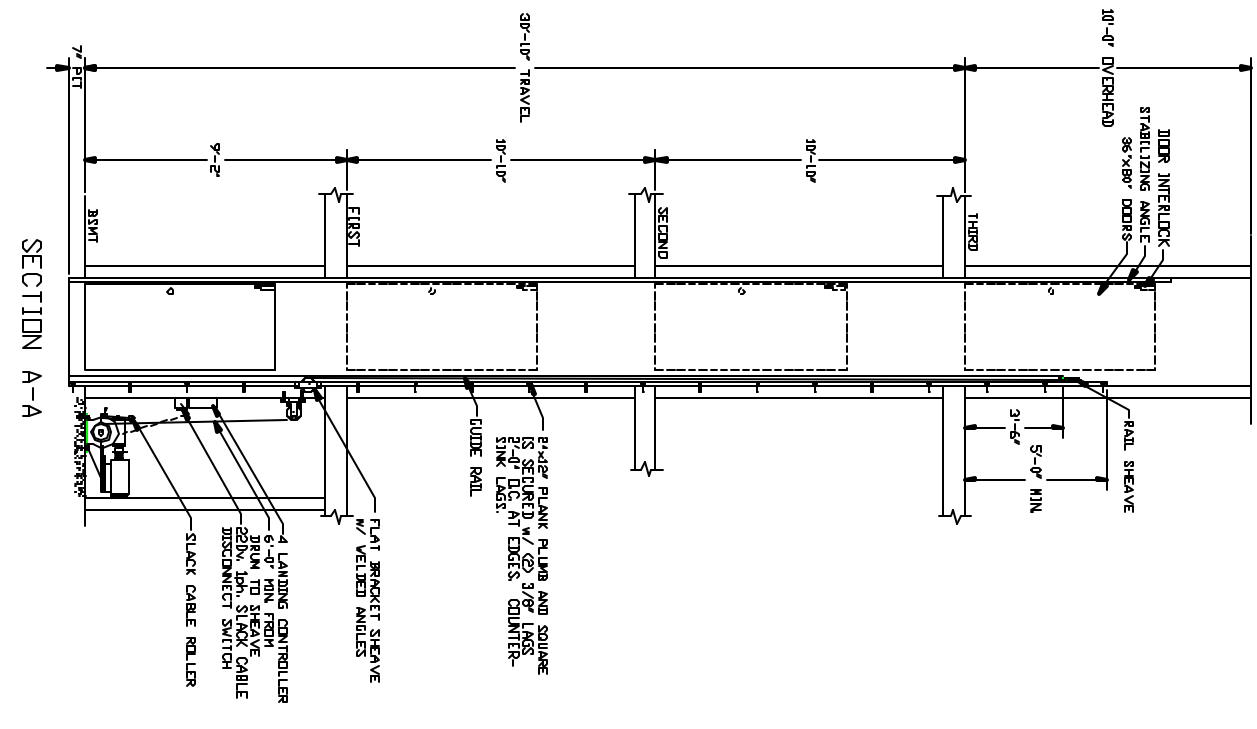
CUTOUT DETAIL



DOOR FRAME DETAIL



SHAFT PLAN A



SECTION A-A